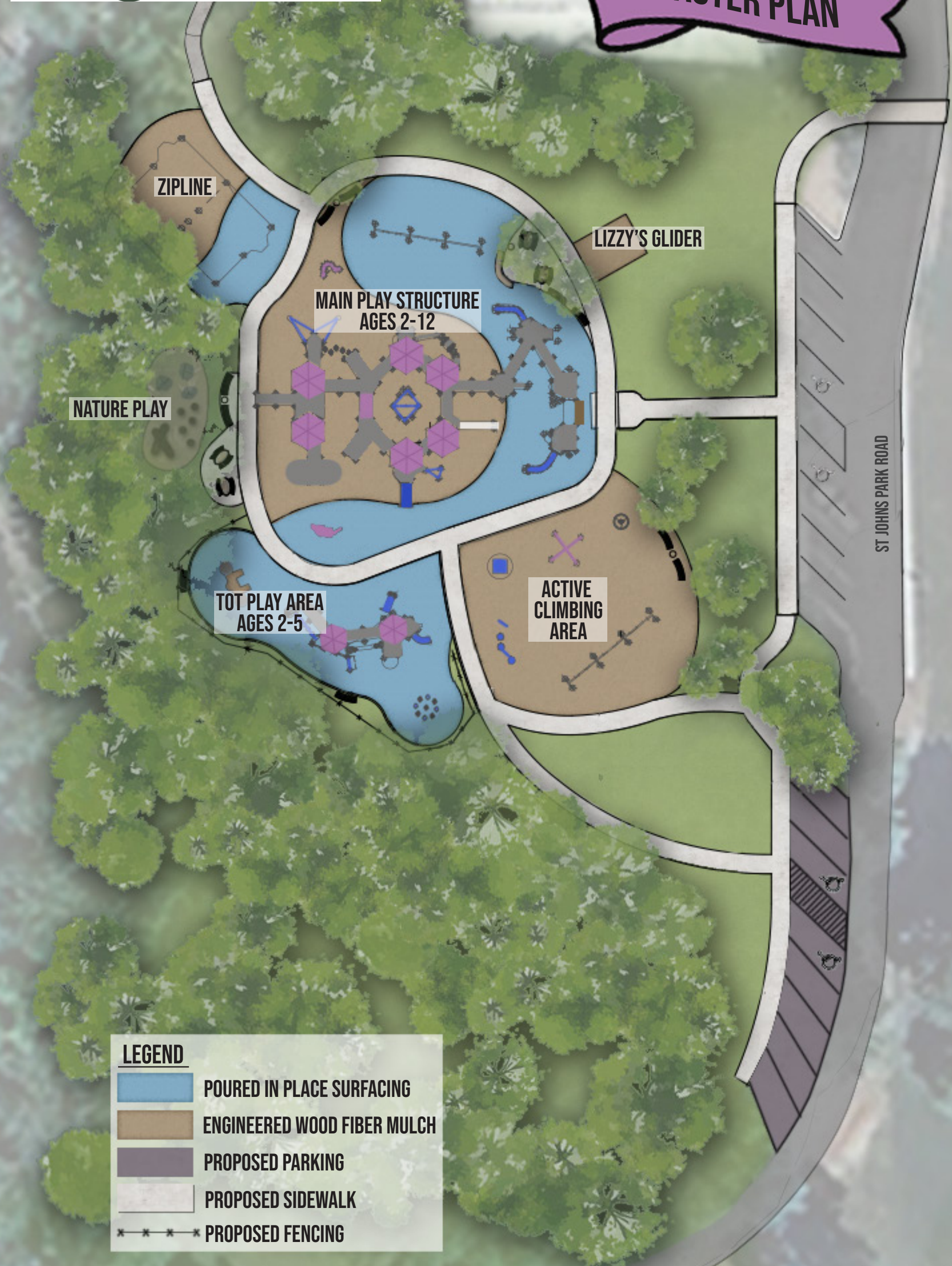


FANTASY FOREST 2.0
MASTER PLAN



LEGEND

- POURED IN PLACE SURFACING
- ENGINEERED WOOD FIBER MULCH
- PROPOSED PARKING
- PROPOSED SIDEWALK
- PROPOSED FENCING

ST JOHNS PARK ROAD

ESTIMATED COST: \$2.4 MILLION